



CITTA' METROPOLITANA DI MESSINA

III^ DIREZIONE - VIABILITA' METROPOLITANA

Integrazione del M.I.T. n°49 del 16.02.2018 con
D.M. n°123 del 19.03.2020 Annualità 2020

**LAVORI DI MANUTENZIONE DEL P.V. CON
MIGLIORAMENTO DEL LIVELLO DI SICUREZZA LUNGO LE
SS.PP. N°1,37,39,40,45,165 e 167**

CUP: B57H2000067001 - COD. 00104.20.ME

PROGETTO ESECUTIVO
Art.23 comma 8 del D.L.gs n.50/2016

ALLEGATI :

- 01.RELAZIONE TECNICA
- 02.PLANIMETRIE GENERALI
- 03.PLANIMETRIE INTERVENTI
- 04.PARTICOLARI COSTRUTTIVI
- 05.ANALISI NUOVI PREZZI
- 06.COMPUTO METRICO ESTIMATIVO
- 07.CRONOPROGRAMMA DEI LAVORI
- 08.QUADRO ECONOMICO DELL'OPERA
- 09.ELENCO PREZZI UNITARI
- 10.CAPITOLATO SPECIALE D'APPALTO E SCHEMA DI CONTRATTO
- 11.PIANO DI SICUREZZA E COORDINAMENTO
- 12.PIANO DI MANUTENZIONE

MESSINA 03 MAG. 2021

PROGETTISTI :

Geom. Carmelo Gaetano MAGGIOLOTI

Geom. Onofrio TRIMARCHI

Geom. Giuseppe PALELLA

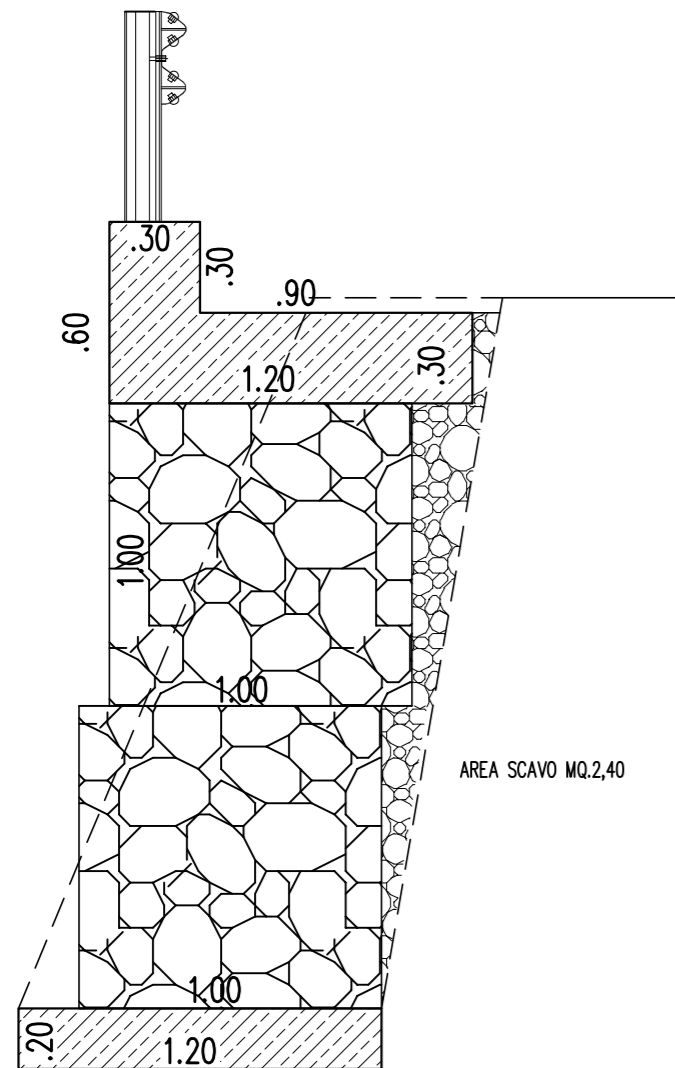
Approvazione in linea tecnica del R.U.P. ai sensi
dell'art.5 comma 3 L.R. n.12/2011 così come
modificato dall'art.24 L.R. 8/2016

PARERE n° _____ del _____

IL R.U.P.

(Ing. Giovanni LENTINI)

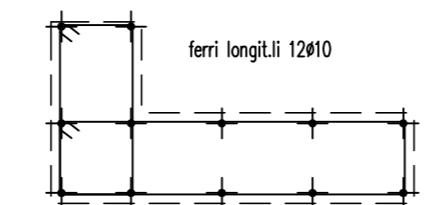




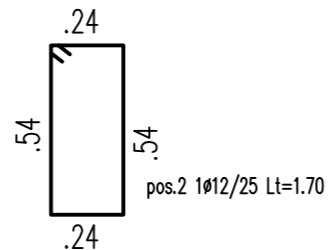
IN FONDAZIONE
RETE ELETTR.TA (maglia 10x10#8)

AREA SCAVO MQ.2,40

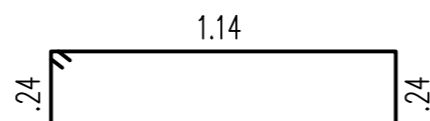
Km 0+100 IN Sx OPERA PROVVISORIALE-GABBIONATA



ferri longit.li 12#10

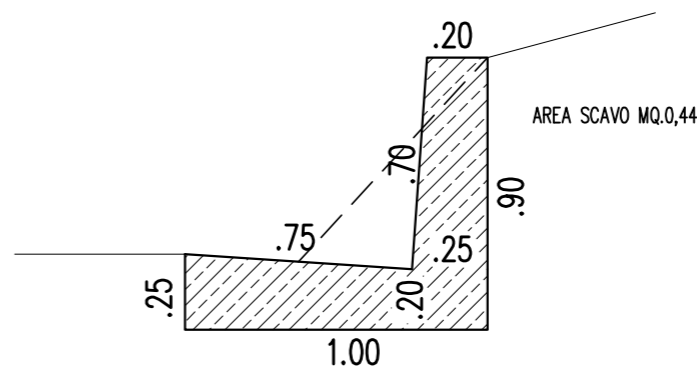


pos.2 1#12/25 Lt=1.70

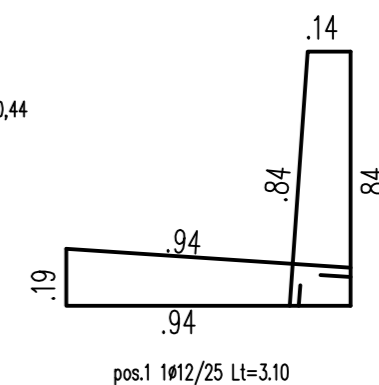


pos.1 1#12/25 Lt=2.90

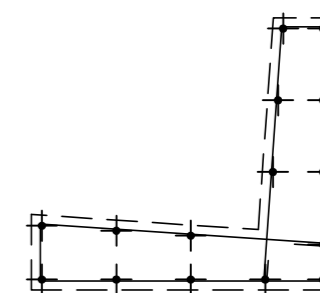
L= 100,00



AREA SCAVO MQ.0,44

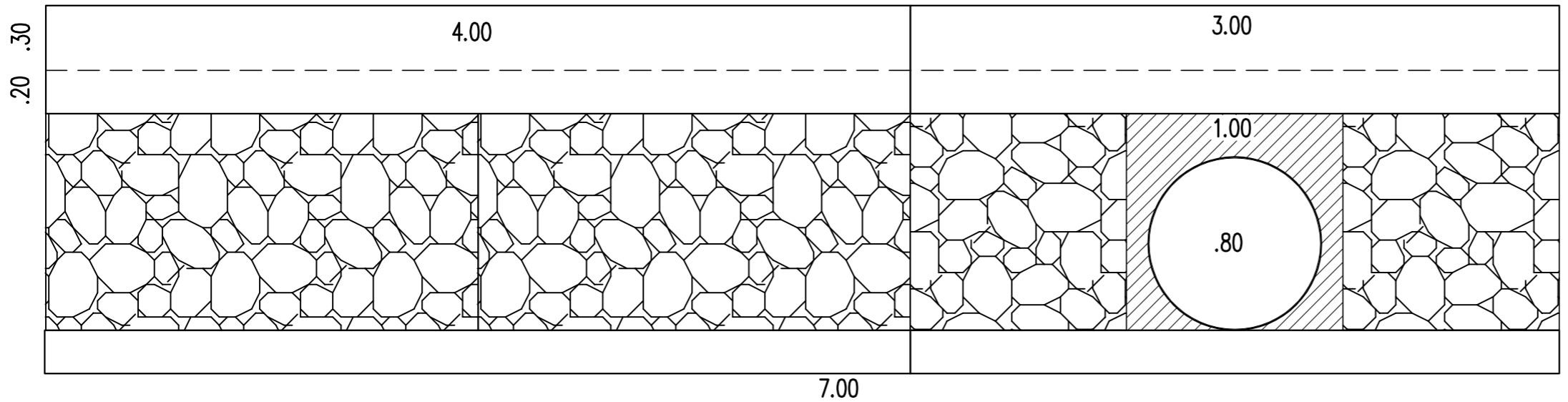


pos.1 1#12/25 Lt=3.10



ferri longitudinali 15#10

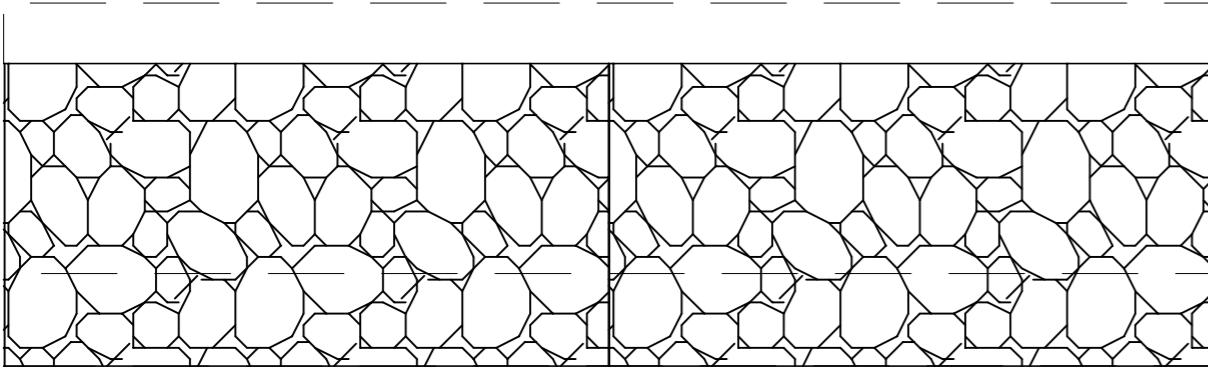
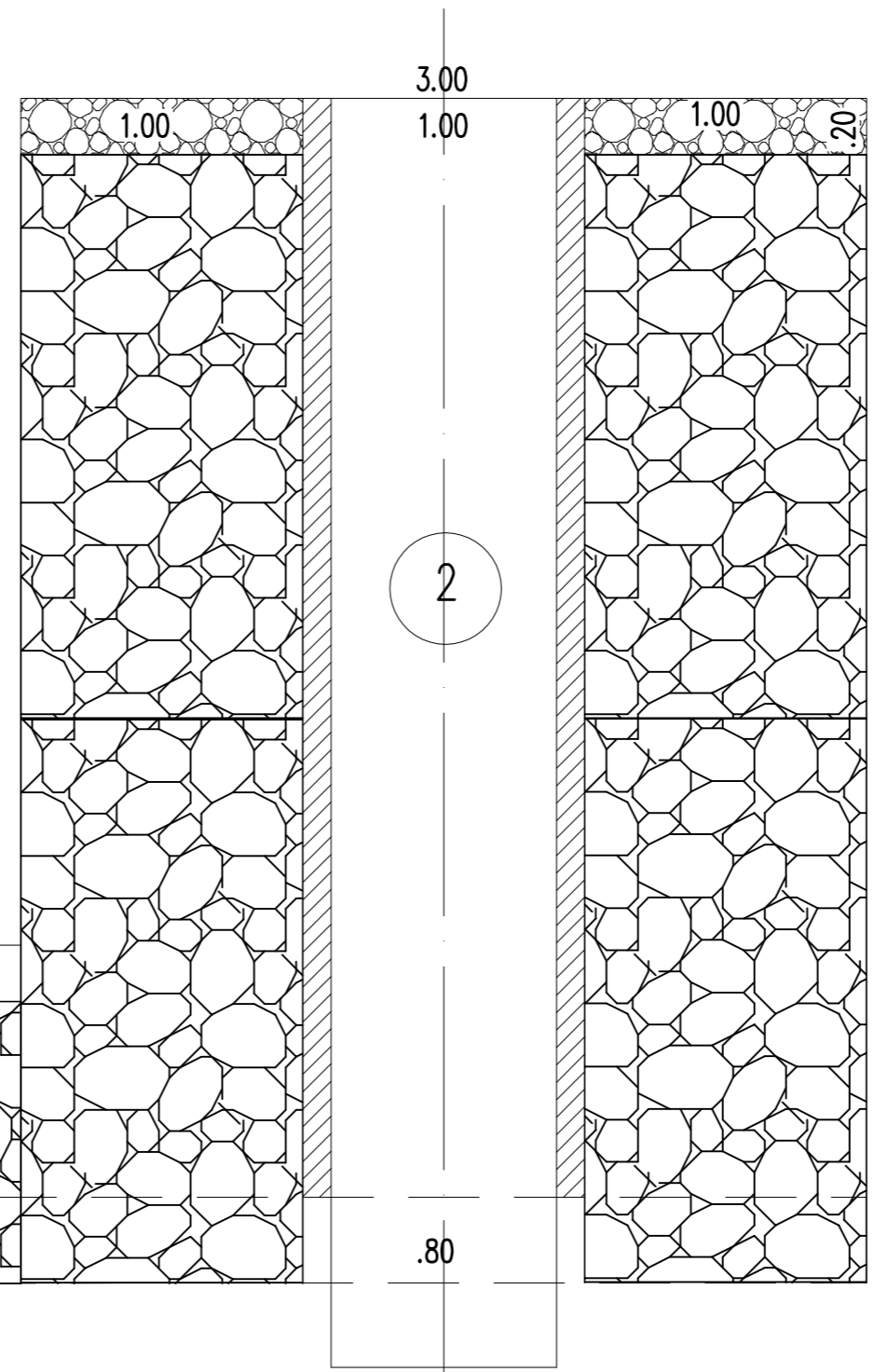
Km 2+600 in dx CUNETTA CON SPALLETTA H70



SPICCATO

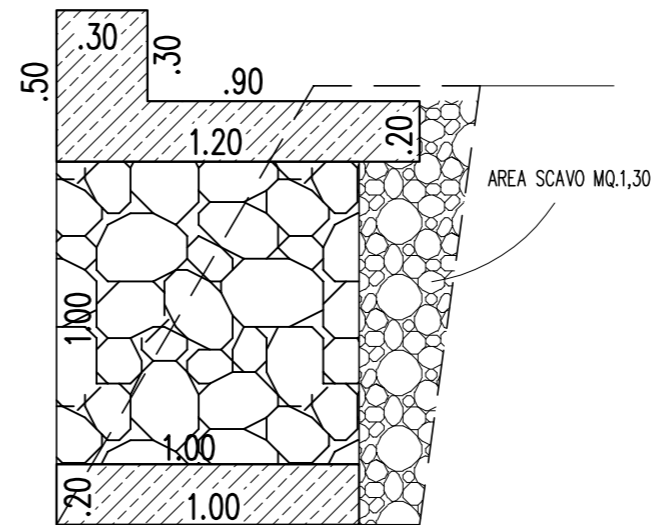
Km 17+100 OPERA PROVVISORIALE – GABBIONATA

PIANTA A QUOTA GABBIONI

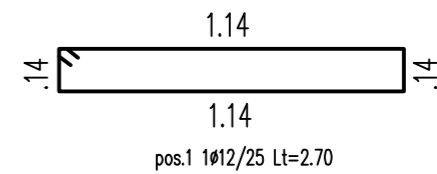
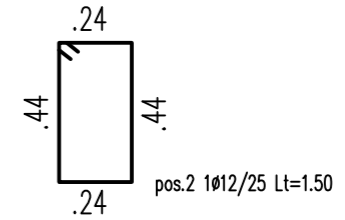
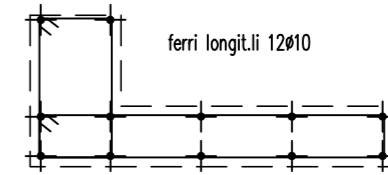


4.20

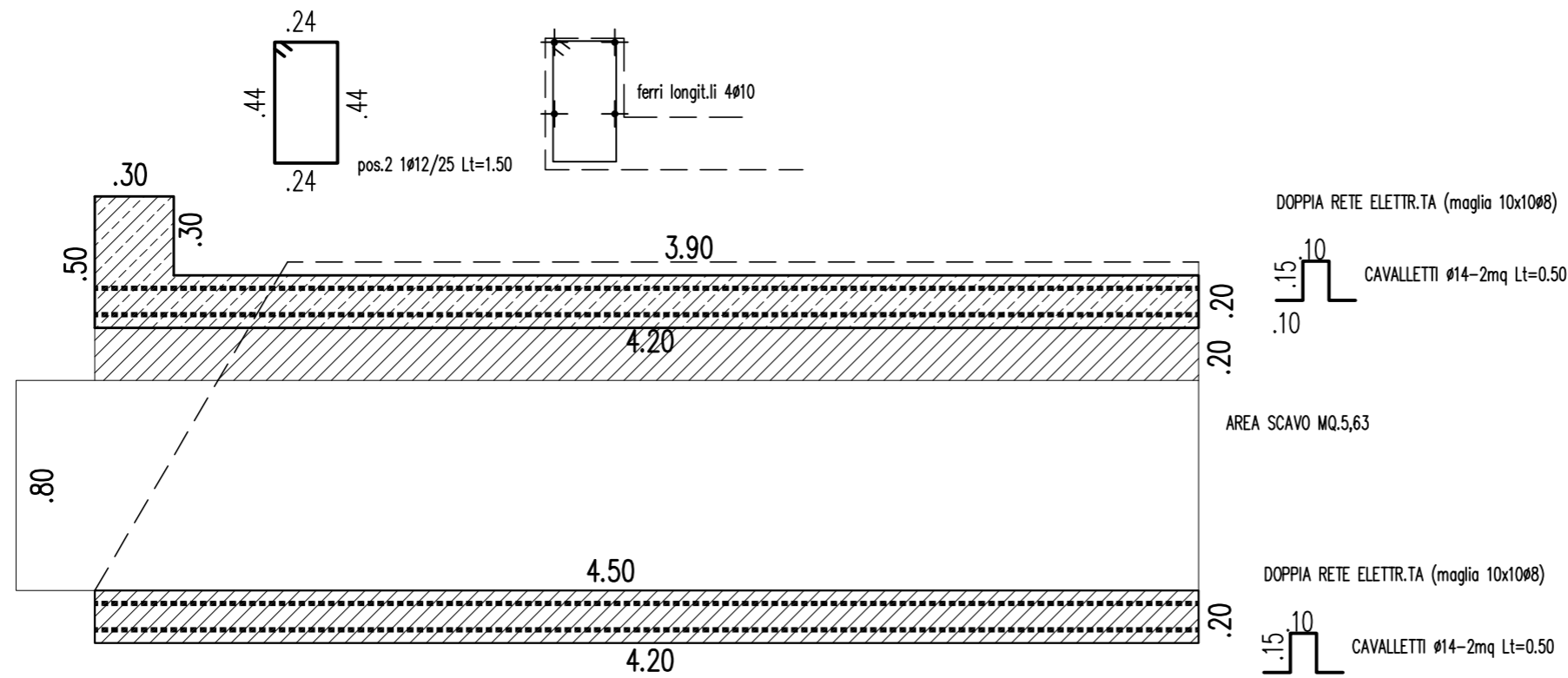
Km 17+100 OPERA PROVVISORIALE – GABBIONATA



IN FONDAZIONE
RETE ELETR.TA (maglia 10x10#8)

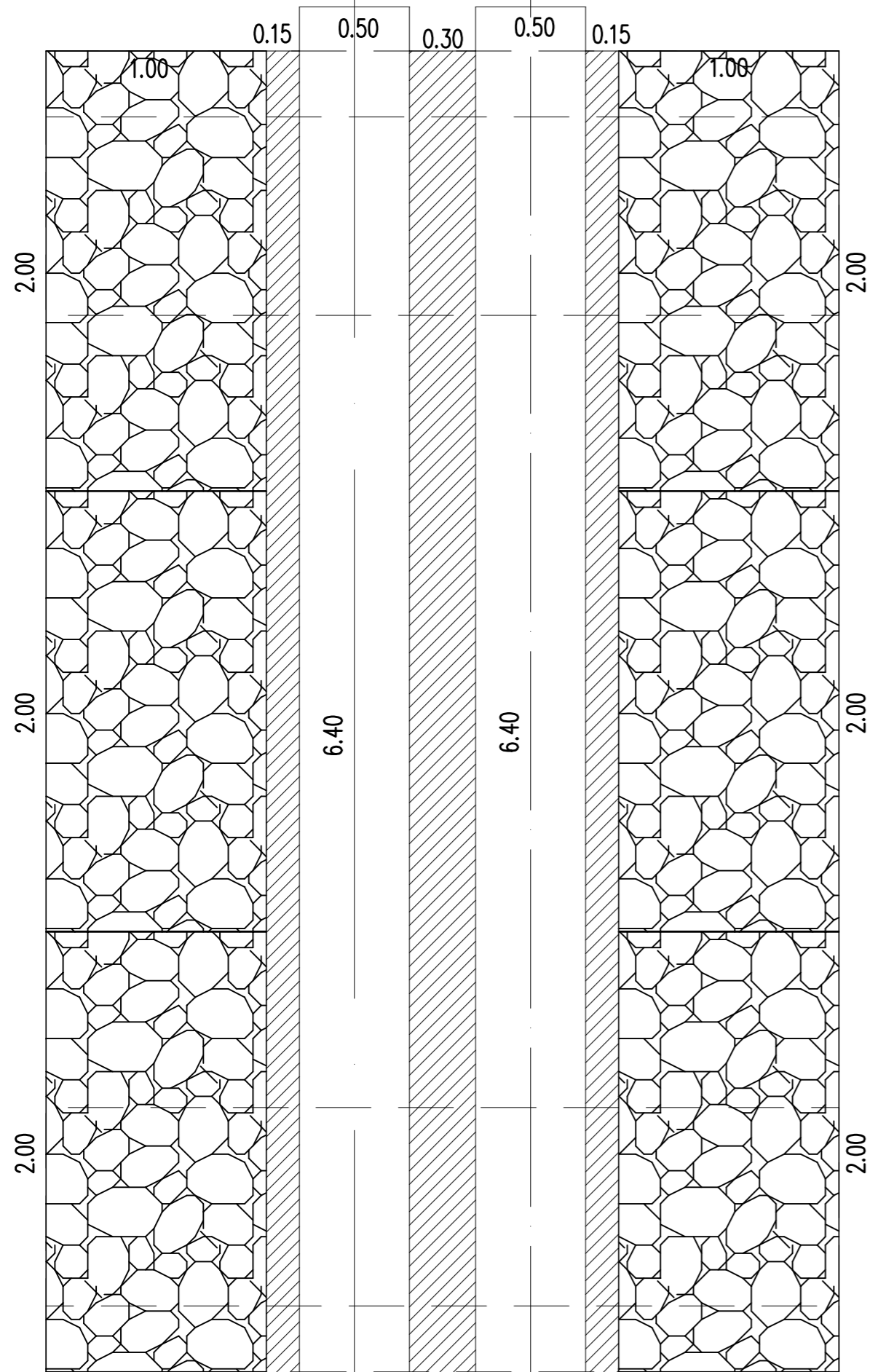


SEZ. TRASVERSALE ①

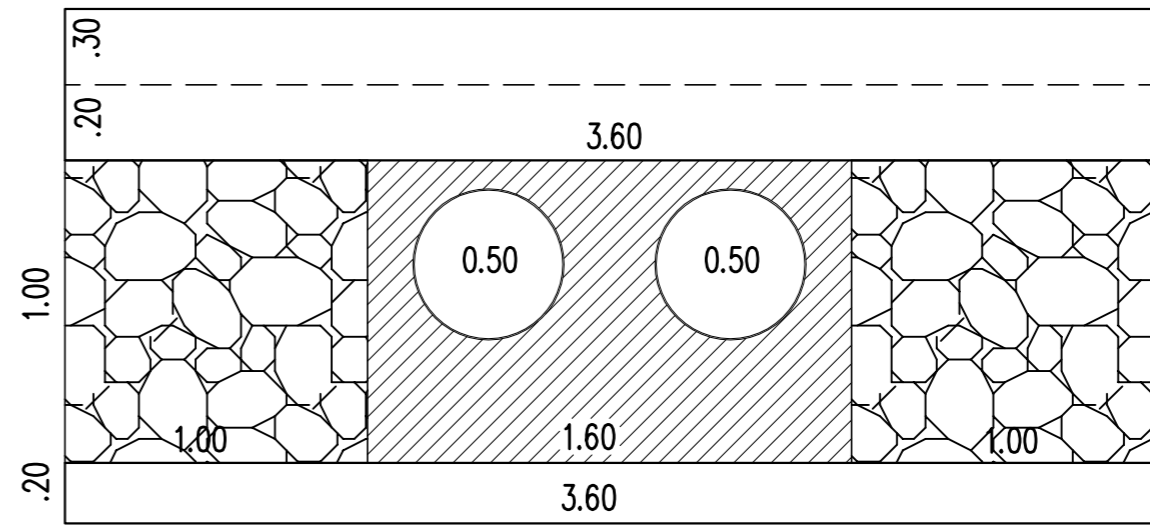


SEZ. TRASVERSALE ②

Km 21+400 OPERA PROVVISORIALE- ATTRAVERSAMENTO TRASVERSALE

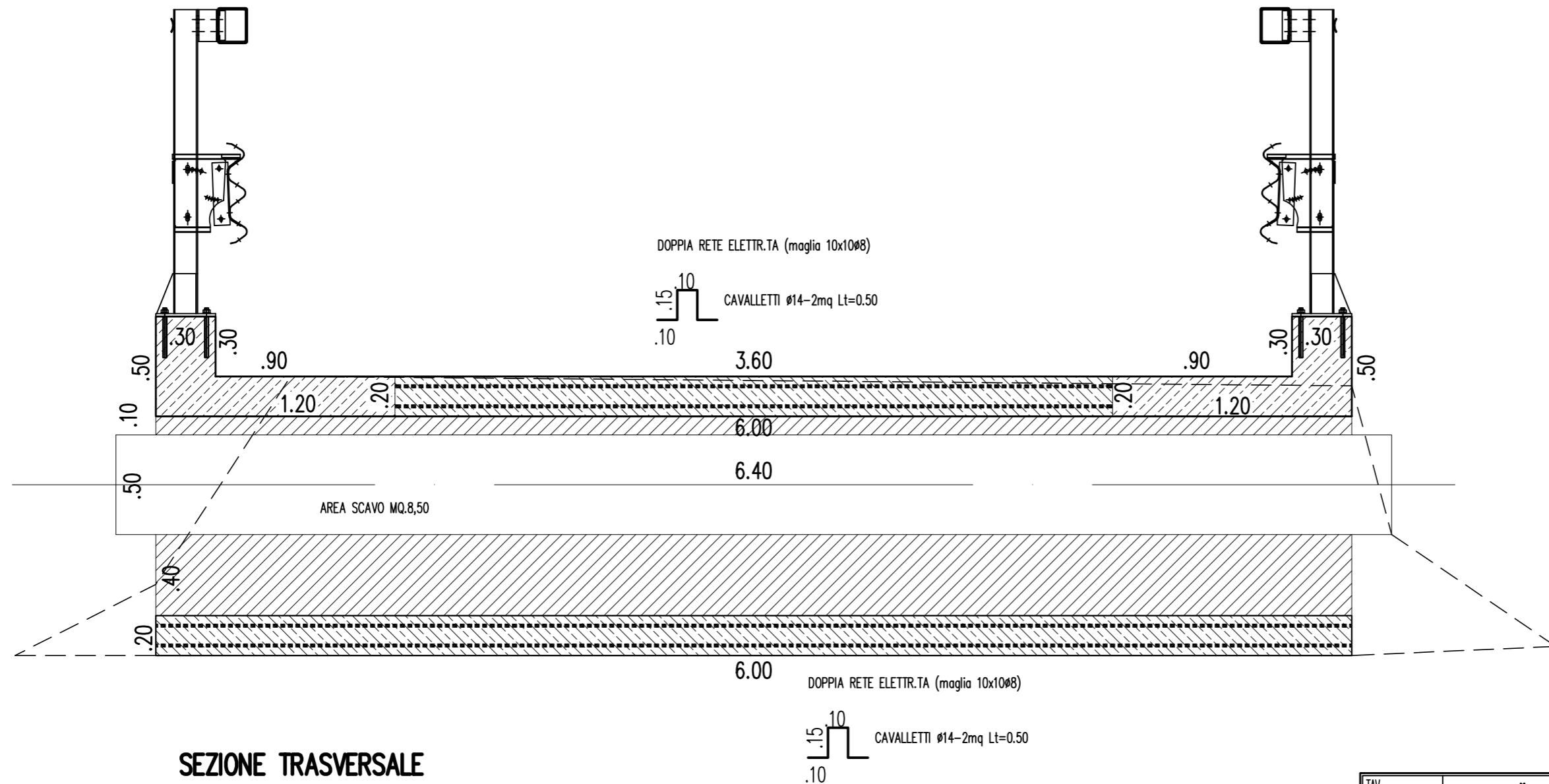
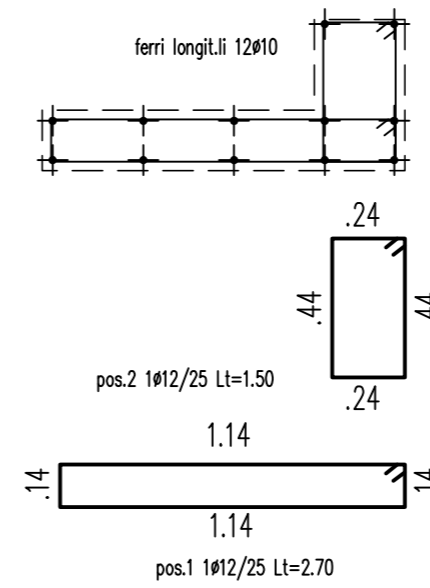
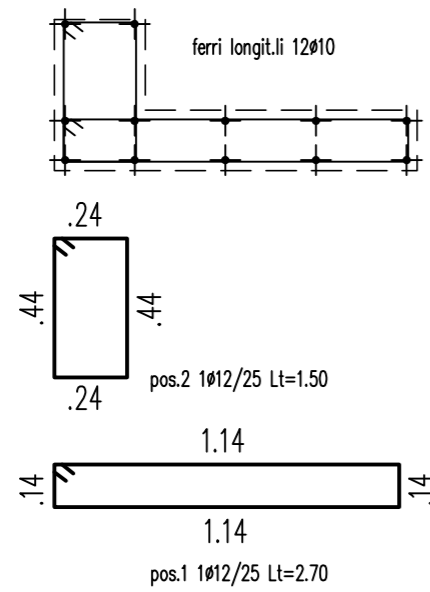


PIANTA A QUOTA GABBIONI



SPICCATO

Km 21+400 OPERA PROVVISORIALE- ATTRAVERSAMENTO TRASVERSALE



SEZIONE TRASVERSALE